



wattsense

Distributed by:

alvasys
automation



www.alvasys.ch

www.alvasys.de



info@alvasys.ch



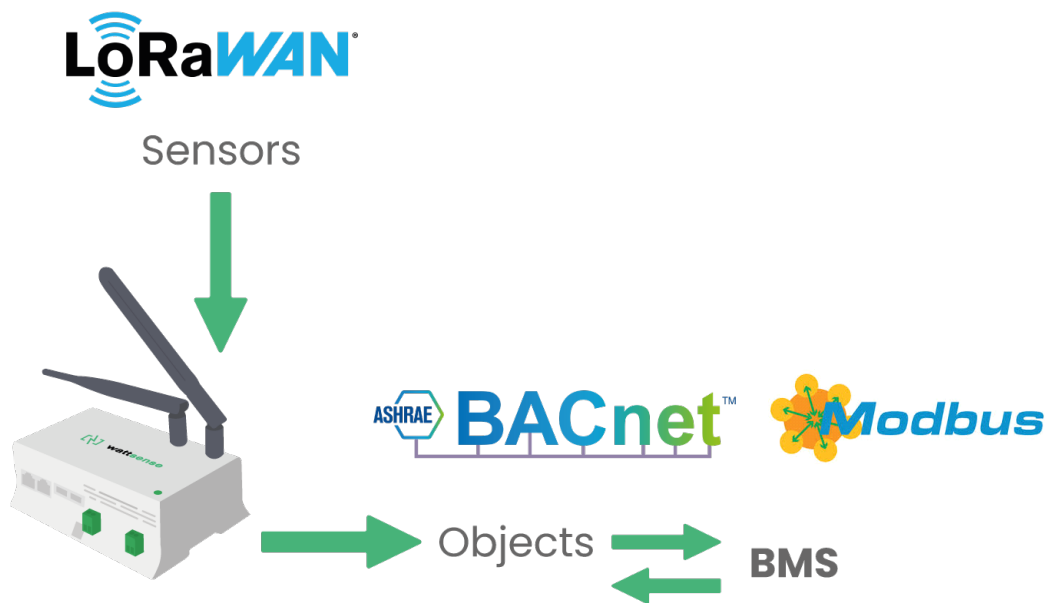
+41 (0)44 261 00 70

LoRaWAN to BACnet Functionality

Access the data of any sensor in minutes. With this functionality, Wattsense locally processes raw LoRaWAN frames, decrypts them, and extracts the needed data point values directly into its Hub. The values can be used on-premises for edge computing use cases, sent to a BMS, or to the local MQTT broker you prefer.

Depending on your project's technical specifications, you can use: the Box, a remotely managed IoT device that collects data and controls equipment with a Cloud Service, or the Hub, an intuitive IoT gateway and powerful controller designed for on-premises building automation.

Both products can access LoRaWAN devices' values, and translate them into BACnet objects used by BACnet BMS systems or BACnet devices.

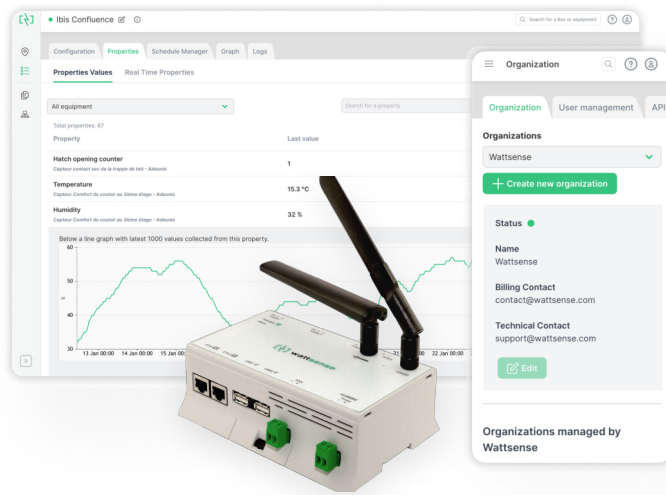


✓ **Simple to use**
Connect devices to a management system in just a few clicks with our Configuration Wizard and quick network setup.

✓ **Quick ROI**
Stand out from competitors by reducing integration time, lower your upfront investment and win more contracts.

✓ **Locally process data**
Connect and manage LoRaWAN sensors, decode, and extract useful information without connecting to an external provider or Cloud.

✓ **Access to BACnet server**
A simple, interoperable, standard way to forward LoRaWAN field data coming from different sensors to a BMS or other supervision tools like a SCADA.



Features

- Multi-site management
- Web-Connected
- GSM data plan
- Automatic software updates
- Cloud Service
- Subscription pricing
- REST API
- Communication via SSL and MQTT
- Local gateway. BACnet, Modbus, MQTT server
- Desktop Application
- One-time purchase

	Box	Hub
Multi-site management	✓	—
Web-Connected	✓	—
GSM data plan	✓	—
Automatic software updates	✓	—
Cloud Service	✓	—
Subscription pricing	✓	—
REST API	✓	—
Communication via SSL and MQTT	✓	✓
Local gateway. BACnet, Modbus, MQTT server	✓	✓
Desktop Application	—	✓
One-time purchase	—	✓

Hardware

- CPU: 528MHz ARM Cortex A7
- Memory: 256MB DDR3 SDRAM
- Storage: 256MB NAND Flash
- 12V-24V DC power input
- Consumption: 5W
- Size: 160 x 110 x 55 mm
- Weight: 340g

Interfaces

- 4G modem, antenna & SIM
- 863 & 928MHz radio module
- 2x Ethernet
- 2x RS485
- 2x USB
- 1x KNX
- 1x M-Bus
- 1x LPB/BSB

Software

- Secure Linux Yocto distribution
- Numerous integrated drivers for buses, protocols and building equipment
- Equipment discovery over BACnet and LonTalk

Drivers

- LoRaWAN 1.0
- Modbus TCP/IP
- Modbus RTU
- BACnet IP
- BACnet MSTP
- LON IP-852
- LON FT10
- M-Bus
- KNX
- LPB
- Diematic
- wM-Bus
- Many more to come: OPC UA, etc.